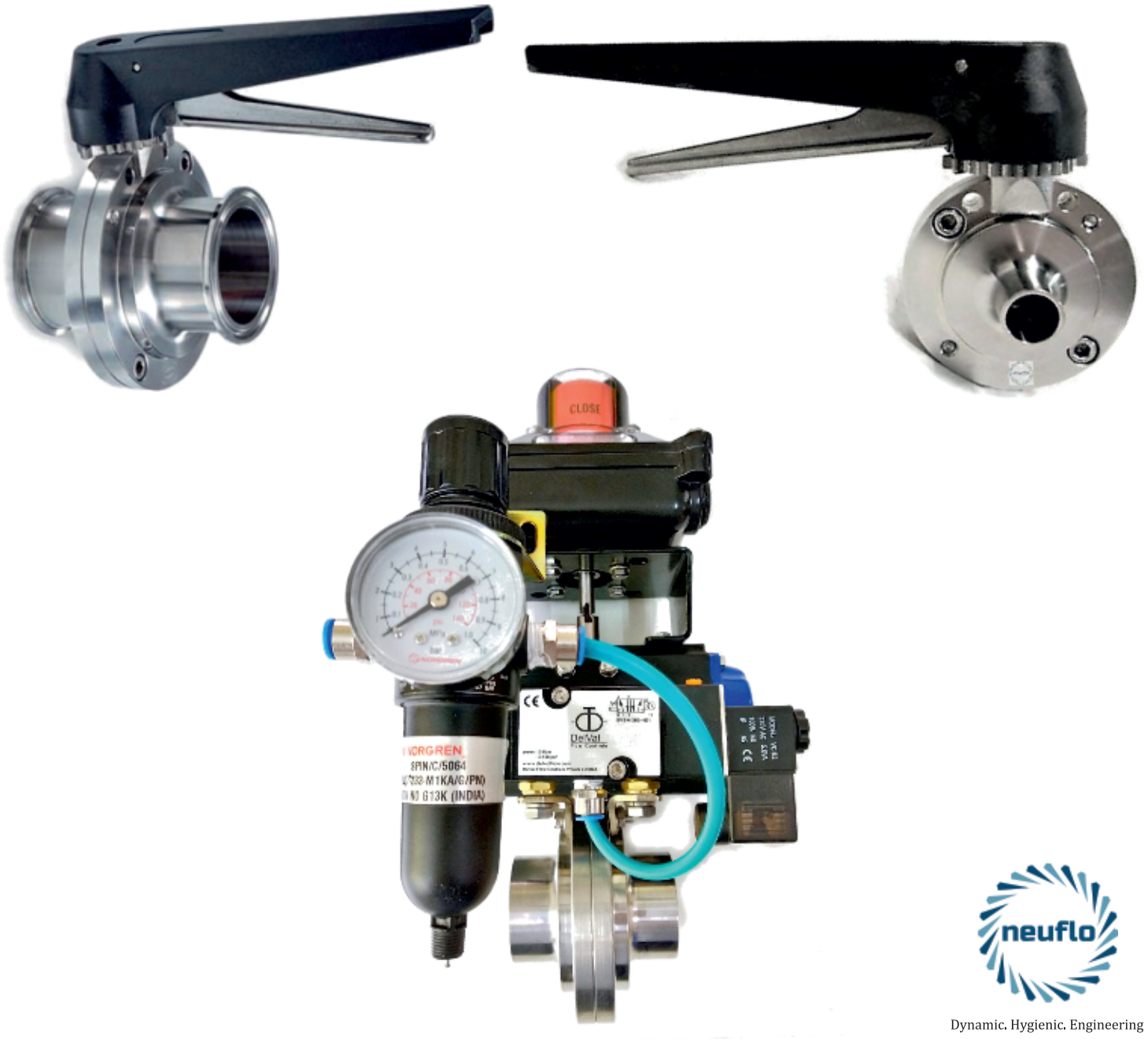


NEUFLO® INA SERIES HYGIENIC BUTTERFLY VALVES

INCH RANGE CATALOGUE



Dynamic. Hygienic. Engineering

MANUFACTURER OF HYGIENIC VALVES & FITTINGS



Office & Factory :

Plot No. 1A, Gat No. 108/1, At Post Ranje, Near Precomp Tools Pvt. Ltd.,
Shivapur-Kondhanpur Road, Tal.- Bhor, Dist. Pune - 412 205.

Phone: +91 9881096804, +91 8605008477 | Website: www.smbiosystems.com

E-mail: parag@smbiosystems.com, mtr@smbiosystems.com

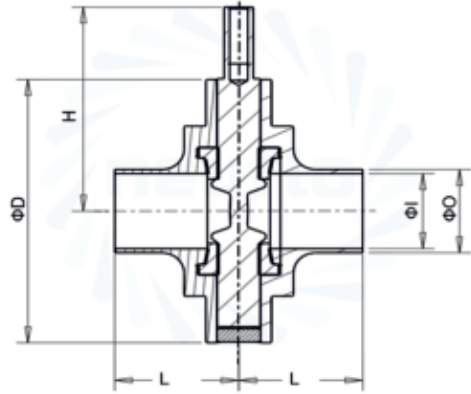
NEUFLO® HYGIENIC BUTTERFLY VALVES - INA SERIES INCH RANGE



Neuflo hygienic butterfly valves are distinctly compact designed and manufactured to perform reliably in difficult production environments assuring complete safety. Neuflo valves are meticulously made in India, using the finest raw materials available. These valves feature specially designed integrated mounting holes for bracketing to precision align optional pneumatic actuators. All valve bodies are precision CNC machined from high quality stainless steel and feature an I.D. finish of less than 0.6mm Ra. Allen bolts on the body are cross threaded which ensure a tight sealing, withstanding the process fluid line vibrations.

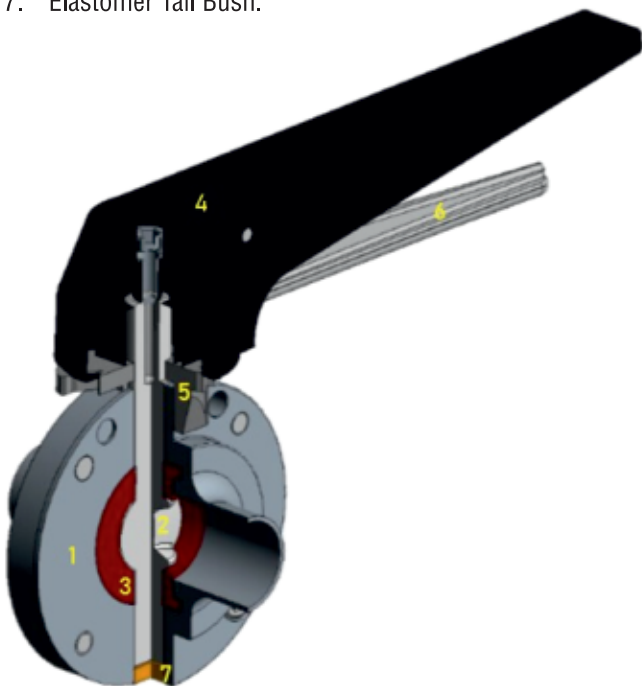
FEATURES :

- Available in SMS/ISO/BS/3-A/DIN.
- Optional end connections (weld/male/clamp).
- One-piece disc and stem assembly.
- Fully machined 304L/316L stainless steel body.
- Bi-directional capability.
- Fully hygienic design with auto option.
- Isolation or regulation control.
- High flow coefficient (Cv).
- Various food grade seat material options.
- Multi position handle assembly.



TECHNICAL SPECIFICATIONS:

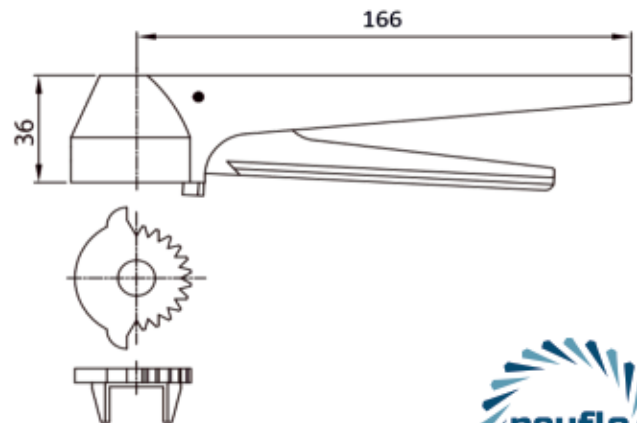
1. Valve Body– forged 304L/316L stainless steel, CNC precision machined finish - Ra <0.6µm.
2. Disc– forged 316L CNC machined, 12x8 mm capsule headed stem, Mirror Polish Finish – Ra <0.4µm.
3. Gasket Seats – Silicone, EPDM, FKM, PTFE (FDA approved elastomers).
4. Handle- High impact Nylon/SS 12 position gripper handle with in-built SS insert.
5. SS Notch plate &
6. SS Grip Lever
7. Elastomer Tail Bush.



INCH RANGE WELD END BUTTERFLY VALVES

SIZE	Φ I	Φ O	L	Φ D	H
1/2"	9.5	12.7	34	79	61
3/4"	15.85	19.05	34	79	61
1"	22.2	25.4	34	79	61
1.5"	34.9	38.1	38	86	64.8
2"	47.6	50.8	40	105	74.3
2.5"	60.3	63.5	40	112	77.6
3"	72.3	76.2	41	125	84.8
4"	97.7	101.6	44	157	101.7
6"	146.9	152.4	70	216.5	138.9

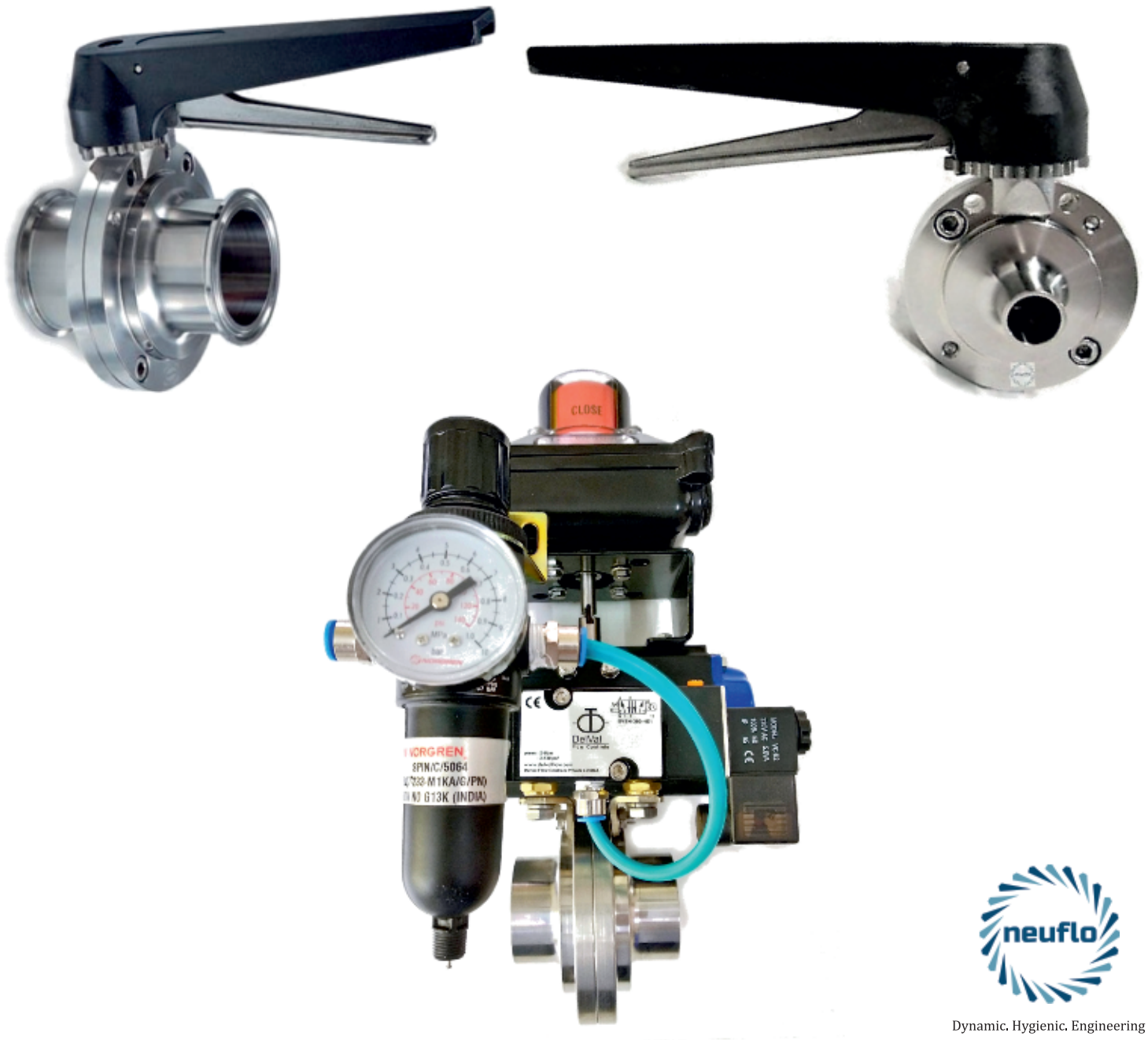
DIMENSIONS ARE IN MM



Dynamic, Hygienic, Engineering

NEUFLO® INA SERIES HYGIENIC BUTTERFLY VALVES

ISO RANGE CATALOGUE



Dynamic. Hygienic. Engineering

MANUFACTURER OF HYGIENIC VALVES & FITTINGS



Office & Factory :

Plot No. 1A, Gat No. 108/1, At Post Ranje, Near Precomp Tools Pvt. Ltd.,
Shivapur-Kondhanpur Road, Tal.- Bhor, Dist. Pune - 412 205.

Phone: +91 9881096804, +91 8605008477 | Website: www.smbiosystems.com

E-mail: parag@smbiosystems.com, mtr@smbiosystems.com

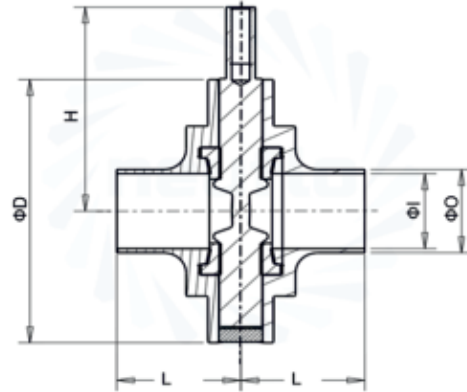
NEUFLO® HYGIENIC BUTTERFLY VALVES - INA SERIES ISO RANGE



Neuflo hygienic butterfly valves are distinctly compact designed and manufactured to perform reliably in difficult production environments assuring complete safety. Neuflo valves are meticulously made in India, using the finest raw materials available. These valves feature specially designed integrated mounting holes for bracketing to precision align optional pneumatic actuators. All valve bodies are precision CNC machined from high quality stainless steel and feature an I.D. finish of less than 0.6mm Ra. Allen bolts on the body are cross threaded which ensure a tight sealing, withstanding the process fluid line vibrations.

FEATURES :

- Available in SMS/ISO/BS/3-A/DIN.
- Optional end connections (weld/male/clamp).
- One-piece disc and stem assembly.
- Fully machined 304L/316L stainless steel body.
- Bi-directional capability.
- Fully hygienic design with auto option.
- Isolation or regulation control.
- High flow coefficient (Cv).
- Various food grade seat material options.
- Multi position handle assembly.



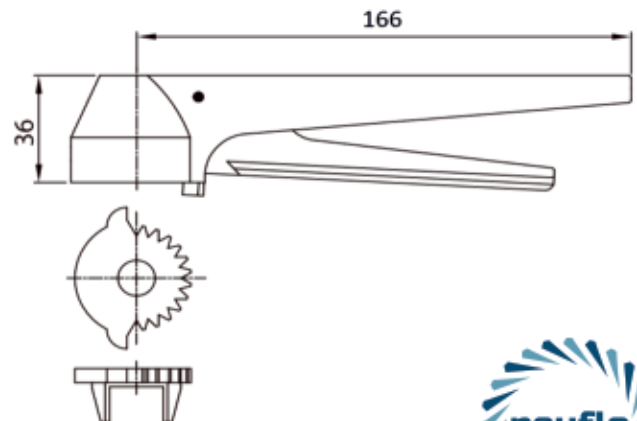
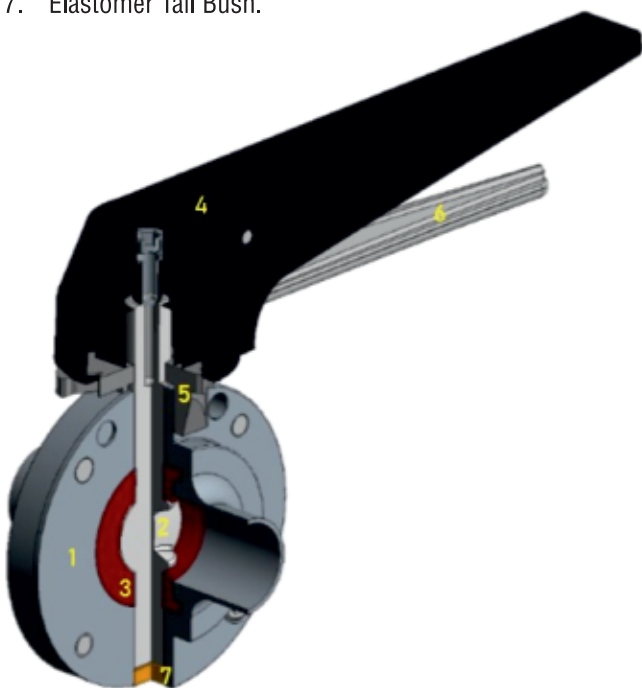
TECHNICAL SPECIFICATIONS:

1. Valve Body– forged 304L/316L stainless steel, CNC precision machined finish - Ra <0.6µm.
2. Disc– forged 316L CNC machined, 12x8 mm capsule headed stem, Mirror Polish Finish – Ra <0.4µm.
3. Gasket Seats – Silicone, EPDM, FKM, PTFE (FDA approved elastomers).
4. Handle- High impact Nylon/SS 12 position gripper handle with in-built SS insert.
5. SS Notch plate &
6. SS Grip Lever
7. Elastomer Tail Bush.

ISO RANGE WELD END BUTTERFLY VALVES

SIZE	ΦI	ΦO	L	ΦD	H
DN25	22.6	25	34	79	61
DN38	35.6	38	38	86	64.8
DN51	48.6	51	40	105	74.3
DN63.5	60.3	63.5	40	112	77.6
DN76.1	72.9	76.1	41	125	84.8
DN101.6	97.6	101.6	44	157	101.7

DIMENSIONS ARE IN MM



Dynamic, Hygienic, Engineering

19MM PORT MOUNTING VALVE



FEATURES

- The injection Needles are Not required.
- No septoms are Required After sterilization.
- No Puncturing Required for Inoculum.
- Easy to operates.
- Directly Mounted on Std DIN 19mm Fermenter Port.
- Dosing of acid / Alkali / Antifom can be done In situ Sterilisable.
- Nutrients can be added Directly from this Port.
- Designed in SS316L as MOC.
- Elastomer 'O' rings are Food grade silicon.
- Finish 0.4 Ra Electropolished.

Manufacturer of HYGIENIC VALVES & FITTINGS



Office & Factory

Plot No. 1A, Gat No. 108/1, At Post Ranje, Near Precomp Tools Pvt. Ltd.,
Shivapur-Kondhanpur Road, Tal.- Bhor, Dist. Pune - 412 205.

Phone: +91 9881096804, +91 8605008477 | Website: www.smbiosystems.com

E-mail: parag@smbiosystems.com, mtr@smbiosystems.com

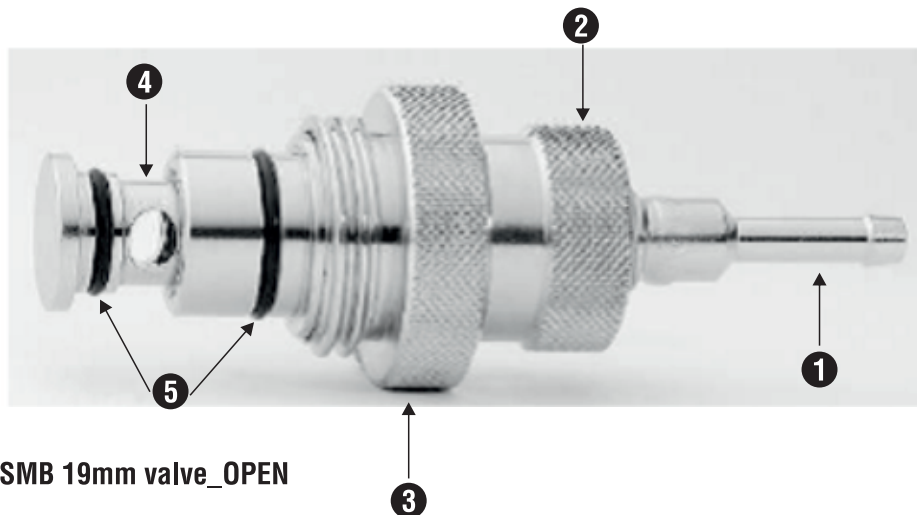
19MM PORT MOUNTING VALVE

19MM port Mounting Valve (Technical Specifications)

- Model: SMB-SPMV-01
- Mounting: 19mm Port with SS sleeve
- MOC: SS316L
- Internal Finish: E/P 0.4 Ra / External Finish: Polished satin finish
- O rings: food grade silicon
- Max temp: 160 Deg C
- Max Pressure : 10 Bar
- Inlet /Outlet Port: Single 6MM Hose Nipple suitable to fix silicon tubing



SMB 19mm valve_CLOSED



SMB 19mm valve_OPEN

PART LIST

1. Hose nipple inlet / outlet
2. Valve open/close Knurled Nut
3. Valve fitment Threaded Nut 19 mm
4. Valve plunger open/close connection
5. Silicon 'o' rings



Dynamic, Hygienic, Engineering

SMB X-FLOW Powder Sampling Valve



APPLICATION :

SMB X-FLOW powder sampling valves are designed to extract powder/granular forms of samples from tanks, reactors or pipelines in a complete hygienic way that is non clogging and cleanable.

SEALS :

Available in silicon, EPDM.

FEATURES :

- i) Lockable inline sampling system that is, collection scoop of valve can be turned 180 degrees in one direction.
- ii) Full T-grip Handle easy to use allows good grip.
- iii) It can be cleaned easily and assembled again.
- iv) No dead space, completely cleanable detachable design.

TECHNICAL SPECIFICATIONS:

1: MODEL	:	SMB-X flow
2: Mounting	:	50.8mm OD TC end.
3: MOC	:	SS 316L
4: OPERATION	:	Manually By Handle 180 deg Turn to Open /Close
5: Inlet Powder Scoop volume	:	6 cm ³
6: Outlet connection	:	25.4 mm TC end
7: Plunger Dia. and Length	:	Dia 35.7mm(Length 67.5mm in Open position & 134mm In Close)
8: Max Operating Temp	:	160 Deg C
9: Working Pressure	:	6 Bar (g)
10: internal surface finish	:	0.4 Ra electropolished
11: External finish	:	Satin /Glossy
12: Cleaning	:	Manual By removing Plunger after Change of Product.

MANUFACTURER OF HYGIENIC VALVES & FITTINGS

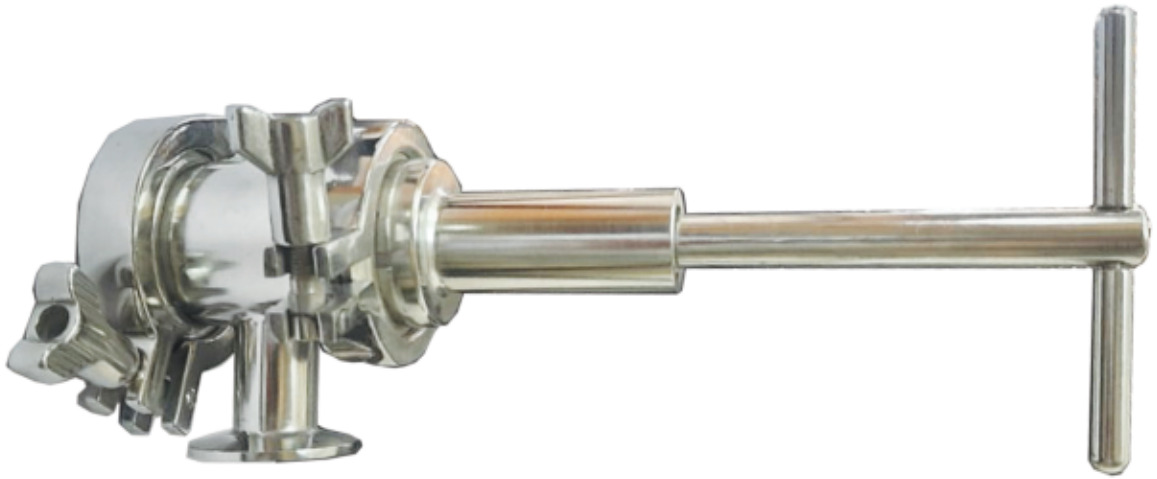


Office & Factory :

Plot No. 1A, Gat No. 108/1, At Post Ranje, Near Precomp Tools Pvt. Ltd., Shivapur-Kondhanpur Road, Tal.- Bhor, Dist. Pune - 412 205.

Phone: +91 9881096804, +91 8605008477 | Website: www.smbiosystems.com

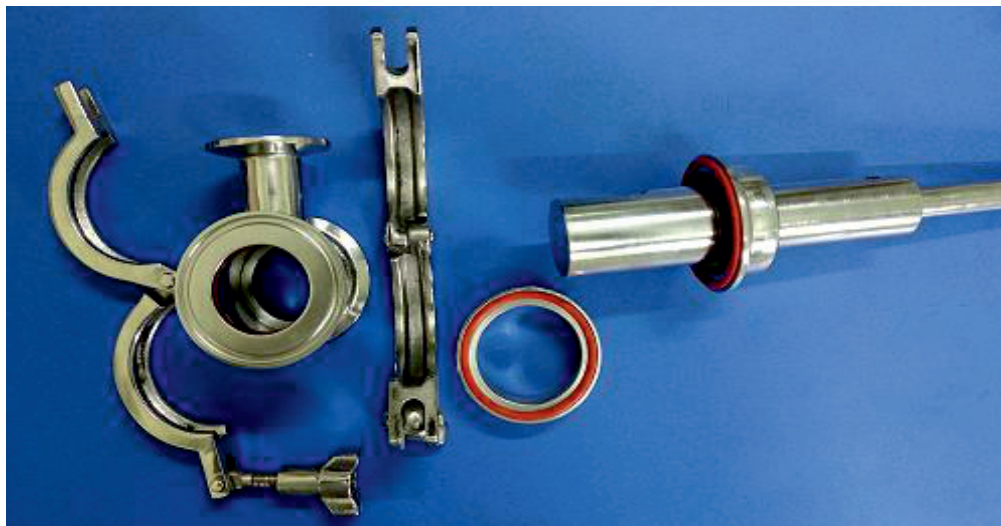
E-mail: parag@smbiosystems.com, mtr@smbiosystems.com



MATERIAL OF CONSTRUCTION:

The contact parts are of SS316L grade and the clamps are of Ss304. Seals are of silicon.

Options : sampling bottles and extended stroke length.



Working:

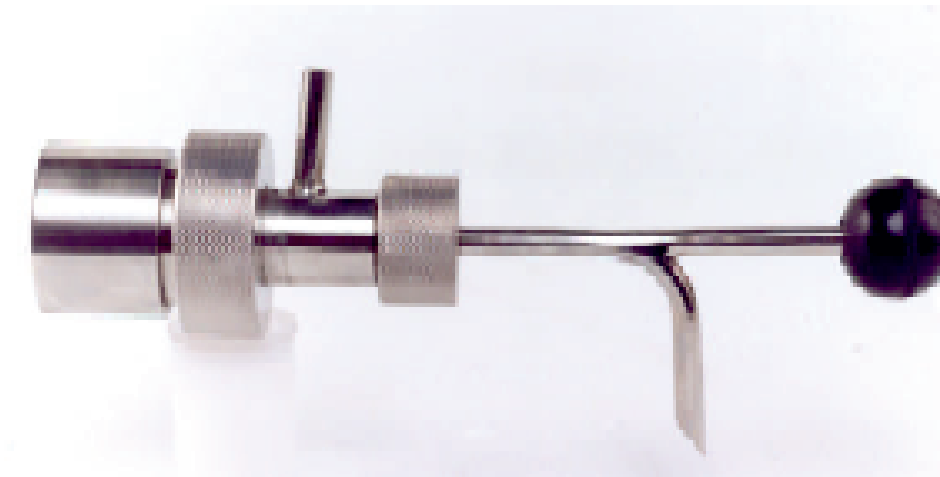
SMB X-FLOW sampling valve provides inline sampling of free flowing and non free flowing materials (granules, powders, flakes, powdered milk and pharmaceutical products in gravity chutes and hoppers. Scoop provided can be pushed inside and can be pulled outside with sample powder then turned 180 degree using the handle to take the sample in a bottle/flask .

Valve Size : 1", 1.5", 2", 2.5", 3" weld end, weld thickness 2mm.
Powder Size : 10 micron to 1/4" (6mm) particle size.
Quantity of sample : upto 10 grams.
Temperature Range : upto 80 deg cel.



Dynamic, Hygienic, Engineering

STERI SAMPLE VALVE MODEL KT - 02



Application : Sampling from tanks and pipeline under sterile conditions for physico-chemical or micro biological Analysis

Construction :

- Valve Body** : Stainless steel AISI 316 L (welding parts with material certificate)
- Sealing** : Silicone EPDM on request
- Product pressure** : Max. 4bar (65 PSI) as standard 6 bar is available on request.

The Valve body is available in following executions:

Type 'F' for direct welding into tanks / flange

Type 'P' for direct welding into pipe / fermented

The manually actuated sterisample valve are steam sterilisable and designed to suit hygienic norms

Operation : Sampling should only be made from sterile sample valve. Before opening the valve, closing cap should be placed on sample piece. Thereafter handle is moved on horizontal position until required flow through lower outlet is obtained. After sampling, handle should be left as it is automatically in this position the handle can not be removed.

Cleaning / Sterilisation : After sampling the valve should be flushed with water or alcohol. Sterilisation is to be done by alcohol or steam. When not in use, the valve may be sealed with alcohol by leaving the clip-on closing cap on the lower outlet and filling with alcohol. By aseptic sampling the channel is to be rinsed with alcohol.

Cleaning in place only with vessel or pipeline cleaning by interval flipping or valve optimal cleaning of valve seat is obtained.

MANUFACTURER OF HYGIENIC VALVES & FITTINGS

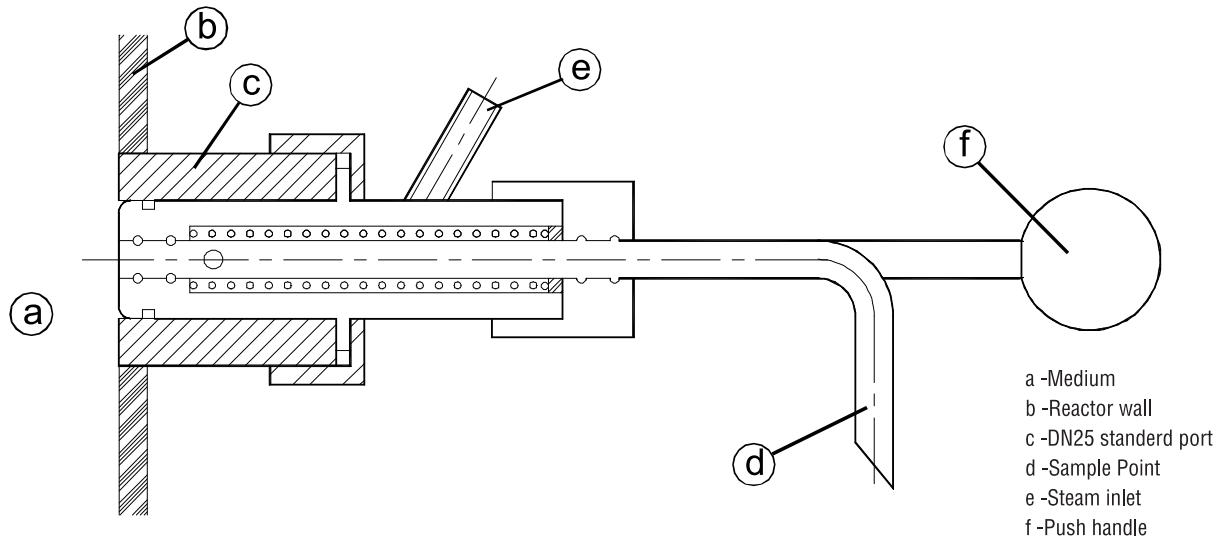


Office & Factory :

Plot No. 1A, Gat No. 108/1, At Post Ranje, Near Precomp Tools Pvt. Ltd.,
Shivapur-Kondhanpur Road, Tal.- Bhor, Dist. Pune - 412 205.

Phone: +91 9881096804, +91 8605008477 | Website: www.smbiosystems.com

E-mail: parag@smbiosystems.com, mtr@smbiosystems.com



Technical Data

Max operating temperature	: 150°C
CMax. operating pressure	: 6bar
Material:- parts in contact with medium	: 316L
- O-ring	: EPDM

Details for ordering

	Part No.
Sampling valve Dn25	20101
- with steam diaphragm valve	20102
- with sterile cartridge	20103
- with stem diaphragm valve and sterile cartridge	20104

Mounting : On tanks and pipe work. Normally the valve should be mounted horizontally with one outlet in upward position and one in downward. If the valve is mounted in another position it should be secured that complete drainage can take place from one of the outlets.

Benefits

- Sterilisable in place with alcohol or steam
- O'ring sealing directly against product
- Representative sampling, giving repeatable results
- Safe to secondary contamination
- Dual purpose, bulk and micro samples (special version)
- Manual and user friendly.

Spare part list

Part No.	
2001'	O'rings
2002	SS316 springs
2003	SS316L fixing Nut
2004	25mm DN port Nut
2005	8mm OD sampling tube
2006	Backlit handle

Operating information (example)

Model	: Type P-KT-01
Application	: Fermented broth
Size	: DN25
Type of mounting	: Socket



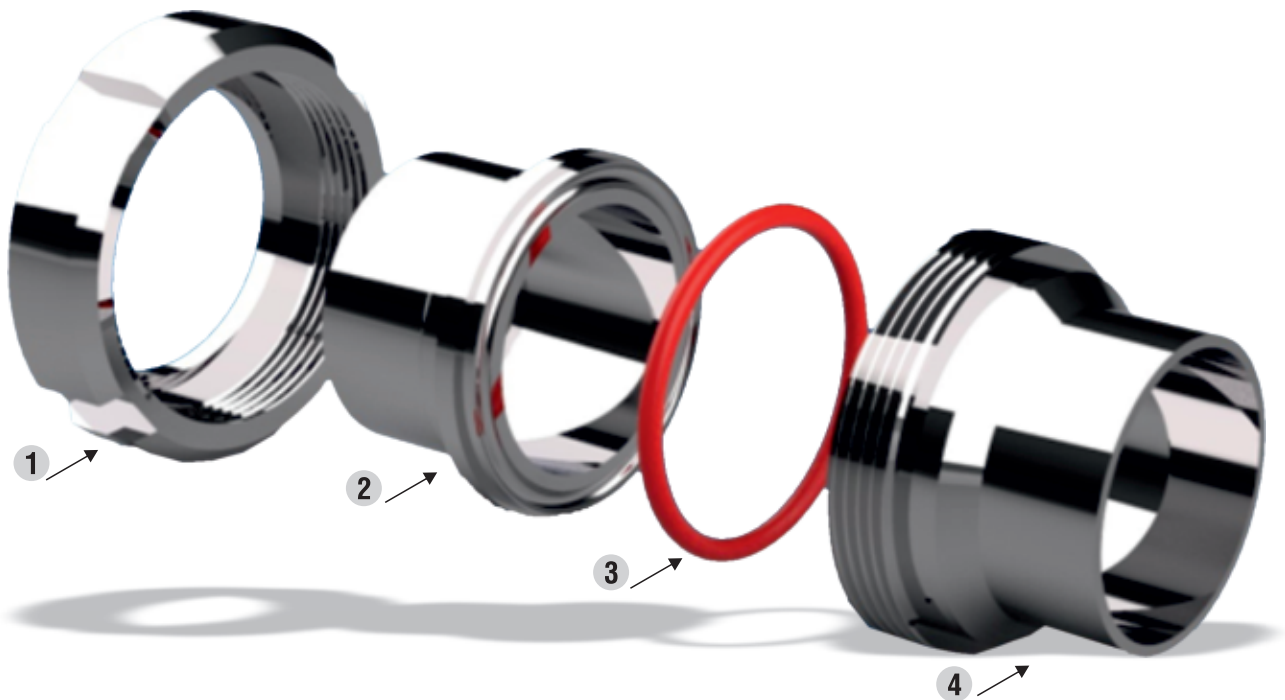
Dynamic, Hygienic, Engineering

STERILE UNIONS – Biopharma Applications DN 25.4 to DN 76 mm



■ FEATURES

- Aseptic fittings for Biopharma Industries
- OC SS316L and O Ring Food grade silicon
- Temp Max 180 Deg C, Pressure 10 Bar (g)
- Internal finish 0.4 Ra, Electropolished
- External Finish Mirror Polished / Satin



PART LIST

1. Sterile unions nut
2. Sterile unions liner
3. Silicon food grade o-ring
4. Threaded liner

MANUFACTURER OF HYGIENIC VALVES & FITTINGS



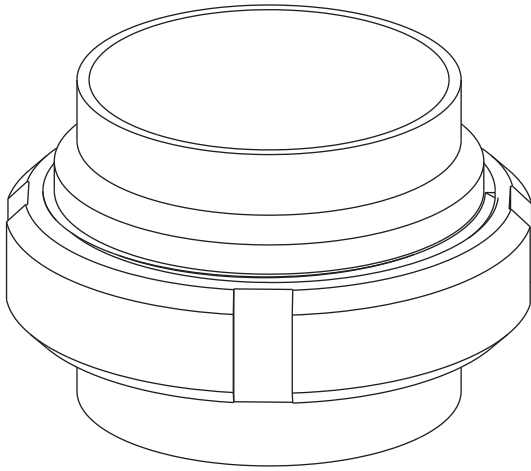
Office & Factory :

Plot No. 1A, Gat No. 108/1, At Post Ranje, Near Precomp Tools Pvt. Ltd.,
Shivapur-Kondhanpur Road, Tal.- Bhor, Dist. Pune - 412 205.

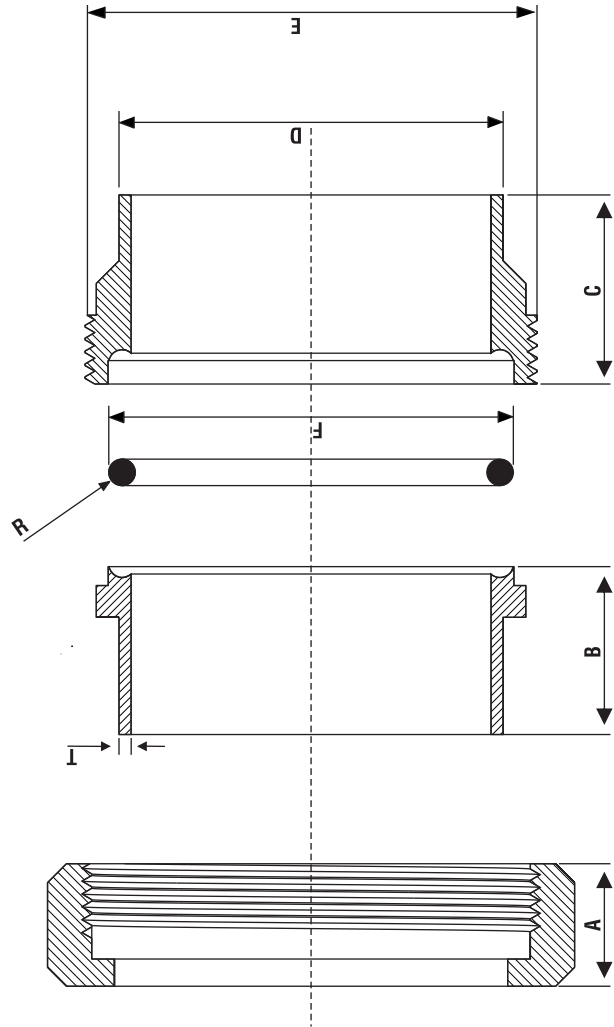
Phone: +91 9881096804, +91 8605008477 | Website: www.smbiosystems.com

E-mail: parag@smbiosystems.com, mtr@smbiosystems.com

STERILE UNION SMB-SU-02 - GA Drawing & Dimensions



GA DRAWING ASSEMBLY



SR.NO.	MODEL NAME	A	B	C	D	E	F	R	T
1	DN 25.4	13.2	27.5	28.1	25.4	35.7	28	1.5	1.6
2	DN 38.1	16.2	27.6	32	38.1	49.85	45	1.5	1.6
3	DN 50.8	16.2	22.2	25	50.8	59.8	53.5	1.75	1.6

ALL DIMENSIONS ARE IN MM.



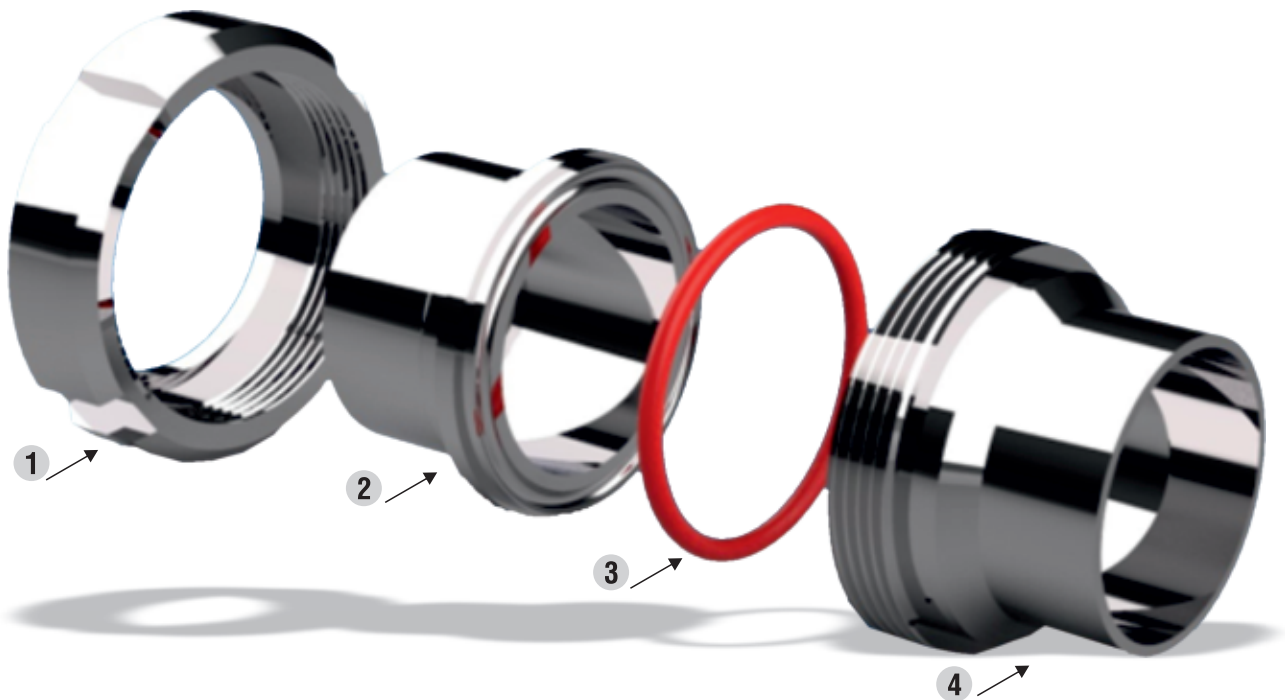
Dynamic, Hygienic, Engineering

STERILE UNIONS – Biopharma Applications DN 25.4 to DN 76 mm



■ FEATURES

- Aseptic fittings for Biopharma Industries
- OC SS316L and O Ring Food grade silicon
- Temp Max 180 Deg C, Pressure 10 Bar (g)
- Internal finish 0.4 Ra, Electropolished
- External Finish Mirror Polished / Satin



PART LIST

1. Sterile unions nut
2. Sterile unions liner
3. Silicon food grade o-ring
4. Threaded liner

Manufacturer of HYGIENIC VALVES & FITTINGS



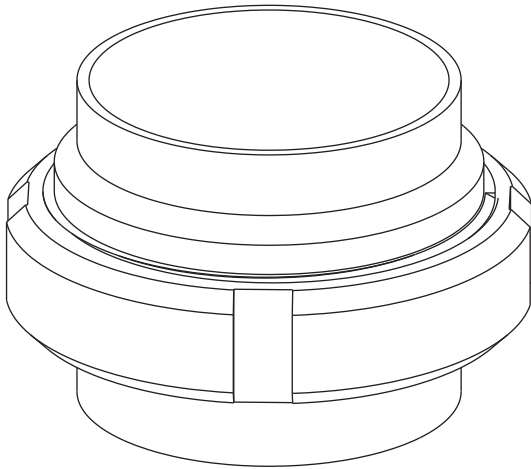
Office & Factory

Plot No. 1A, Gat No. 108/1, At Post Ranje, Near Precomp Tools Pvt. Ltd.,
Shivapur-Kondhanpur Road, Tal.- Bhor, Dist. Pune - 412 205.

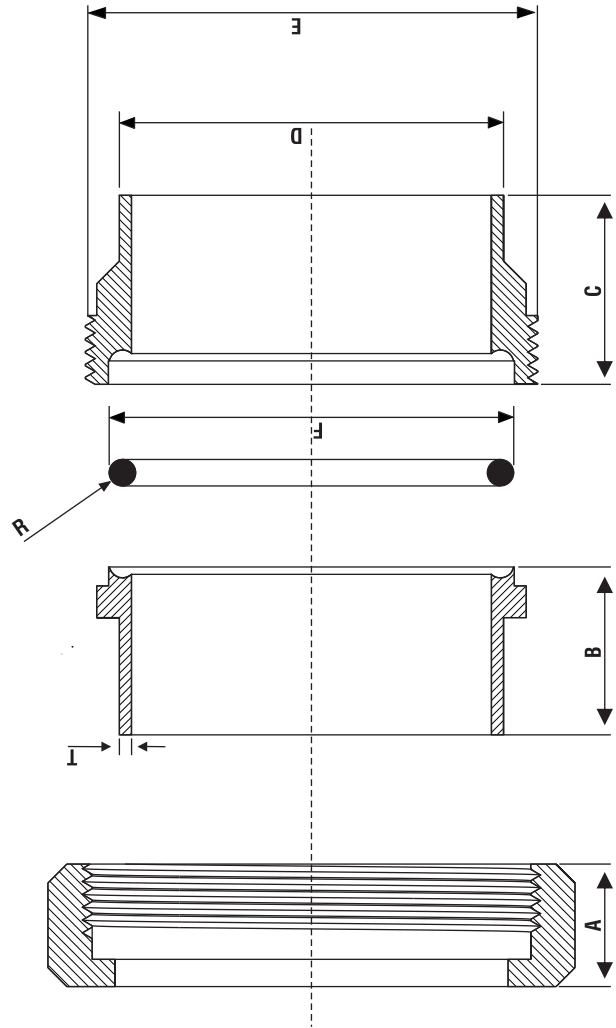
Phone: +91 9881096804, +91 8605008477 | Website: www.smbiosystems.com

E-mail: parag@smbiosystems.com, mtr@smbiosystems.com

STERILE UNION SMB-SU-03 - GA Drawing & Dimensions



GA DRAWING ASSEMBLY



SR.NO.	MODEL NAME	A	B	C	D	E	F	R	T
1	DN 63.5	17	27	29.4	75	63.5	68	1.5	2.1
2	DN 76	20.1	33.3	30	87.4	76	78	1.5	2

ALL DIMENSIONS ARE IN MM.



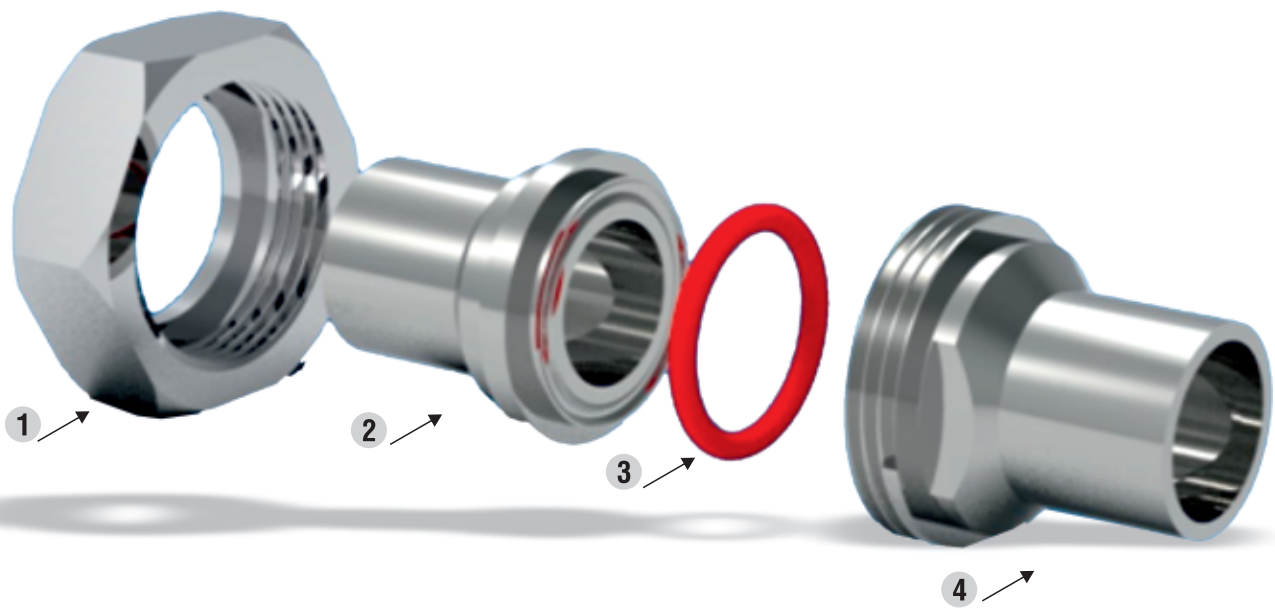
Dynamic, Hygienic, Engineering

STERILE UNIONS – Biopharma Applications DN 8 to DN 19 mm



■ FEATURES

- Aseptic fittings for Biopharma Industries
- OC SS316L and O Ring Food grade silicon
- Temp Max 180 Deg C, Pressure 10 Bar (g)
- Internal finish 0.4 Ra, Electropolished
- External Finish Mirror Polished / Satin



PART LIST

1. Sterile unions nut
2. Sterile unions liner
3. Silicon food grade o-ring
4. Threaded liner

Manufacturer of HYGIENIC VALVES & FITTINGS



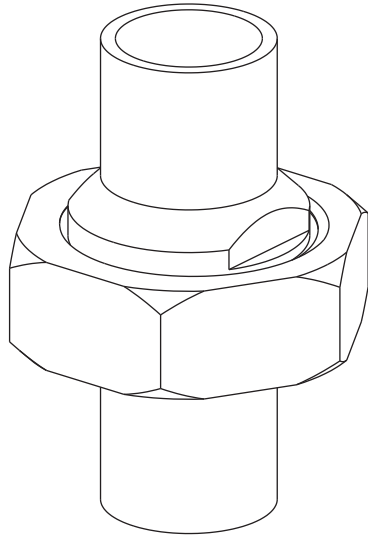
Office & Factory

Plot No. 1A, Gat No. 108/1, At Post Ranje, Near Precomp Tools Pvt. Ltd.,
Shivapur-Kondhanpur Road, Tal.- Bhor, Dist. Pune - 412 205.

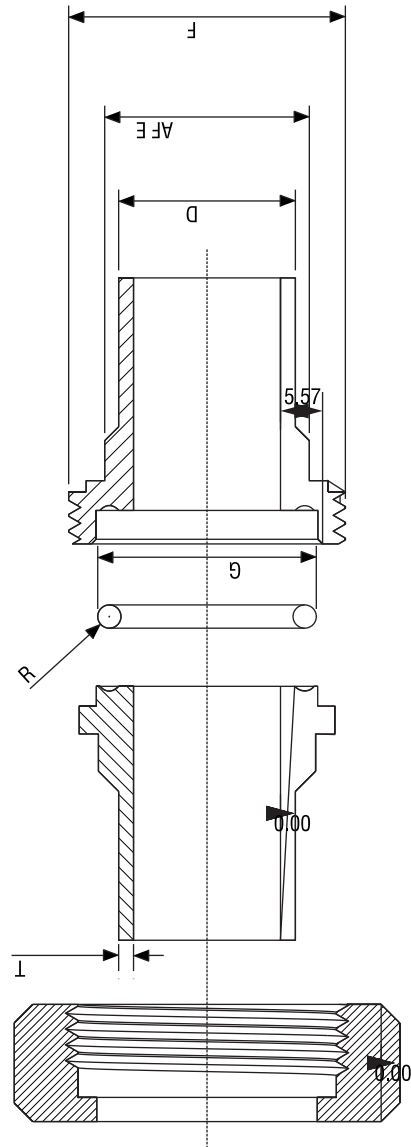
Phone: +91 9881096804, +91 8605008477 | Website: www.smbiosystems.com

E-mail: parag@smbiosystems.com, mtr@smbiosystems.com

STERILE UNION SMB-SU-01 - GA Drawing & Dimensions



GA DRAWING ASSEMBLY



SR.NO.	MODEL NAME	A	B	C	D	E	F	G	RT
1	DN 8	12.1	27.4	28.1	8	17	21.8	15	1.41.6
2	DN 12.7	12.1	27	28	12.7	17	21.8	15	1.251.6
3	DN 19	12.6	27.3	28.6	19	22	29.75	23.5	1.251.6

ALL DIMENSIONS ARE IN MM.



Dynamic, Hygienic, Engineering